

STANDARD ARRIVAL CHART INSTRUMENT (STAR) - ICAO

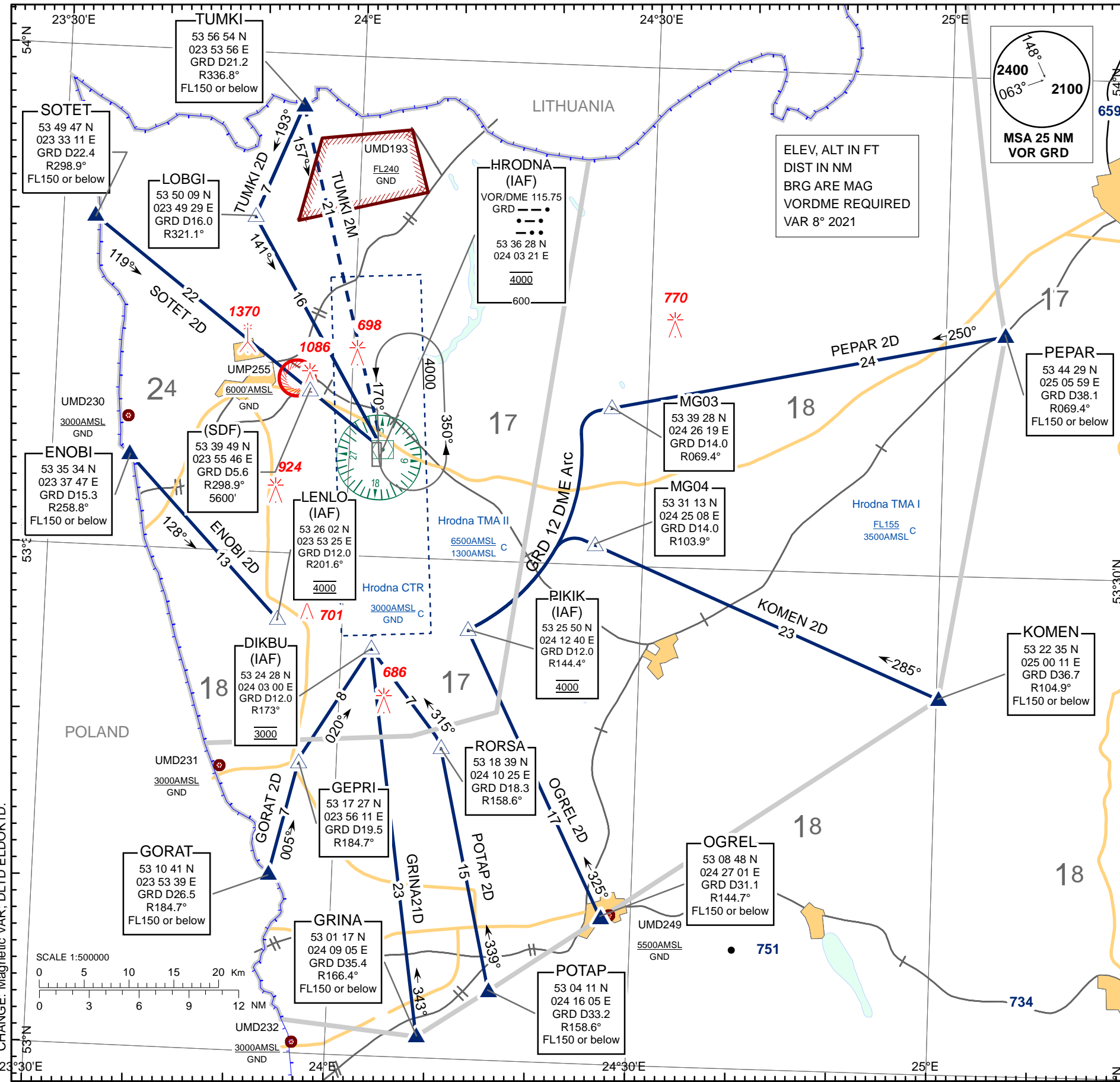
TRANSITION LEVEL: by ATC
TRANSITION ALTITUDE: 6000

Alt set: - hPa (mm on req)
- QNH (QFE on req)

TWR 134.500
MET 135.025 (EN)
126.175 (RUS)

HRODNA
RWY 35

ENOBI 2D, GORAT 2D, GRINA 2D
KOMEN 2D, OGREL 2D, PEPAR 2D
POTAP 2D, SOTET 2D, TUMKI 2D
TUMKI 2M



STANDARD ARRIVAL CHART INSTRUMENT (STAR) ROUTES HRODNA RWY 35	
STAR NAME	ROUTE
ENOBI 2D	ENOBI TWO DELTA After passing ENOBI proceed on 128° track to LENLO (IAF). Cross LENLO (IAF) at 4000 AMSL.
GORAT 2D	GORAT TWO DELTA After passing GORAT proceed on 005° track to GEPRI, turn RIGHT and proceed on 020° track to DIKBU (IAF). Cross DIKBU (IAF) at 3000 AMSL.
GRINA 2D	GRINA TWO DELTA After passing GRINA proceed on 343° track to DIKBU (IAF). Cross DIKBU (IAF) at 3000 AMSL.
KOMEN 2D	KOMEN TWO DELTA After passing KOMEN intercept GRD VOR R-104° inbound to MG04, turn LEFT along GRD DME D12 arc to PIKIK (IAF). Cross PIKIK (IAF) at 4000 AMSL.
OGREL 2D	OGREL TWO DELTA After passing OGREL intercept GRD VOR R-145° inbound to PIKIK (IAF). Cross PIKIK (IAF) at 4000 AMSL.
PEPAR 2D	PEPAR TWO DELTA After passing PEPAR intercept GRD VOR R-069° inbound to MG03, turn LEFT along GRD DME D12 arc to PIKIK (IAF). Cross PIKIK (IAF) at 4000 AMSL.
POTAP 2D	POTAP TWO DELTA After passing POTAP intercept GRD VOR R-159° inbound to RORSA, turn LEFT and proceed on 315° track to DIKBU (IAF). Cross DIKBU (IAF) at 3000 AMSL.
SOTET 2D	SOTET TWO DELTA After passing SOTET intercept GRD VOR R-299° inbound to GRD (IAF). Cross GRD (IAF) at 4000 AMSL.
TUMKI 2D	TUMKI TWO DELTA After passing TUMKI proceed on 193° track to LOBGI, turn LEFT to intercept GRD VOR R-321° inbound GRD (IAF). Cross GRD (IAF) at 4000 AMSL.
TUMKI 2M	TUMKI TWO MIKE After passing TUMKI intercept GRD VOR R-337° inbound to GRD (IAF). Cross GRD (IAF) at 4000 AMSL.

CHANGE: Magnetic VAR: DLT D ELDOK1D.

BELAERONAVIGATSIA SOE

THIS PAGE INTENTIONALLY LEFT BLANK